



RASCOtec Injection Channel

INJECTIONSISTEMS

INJECTIONSISTEMS

The RASCOtec injection system is a comprehensive system consisting of different profile types. This allows it to be used optimally for various technical requirements, such as waterproofing construction joints, crack control joints, expansion joints or penetrations. The profiles of the RASCOtec injection system are always installed in the concrete. Once the concrete has hardened, the RASCOtec injection systems are injected using RASCOflex injection resins. The advantage of using the RASCOtec injection system is that the subsequent injection can be carried out efficiently and in a controlled manner, whereby neighbouring defects are usually sealed automatically. The choice of injection medium should always be based on the functional requirements and the conditions of the application.

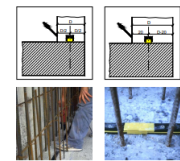
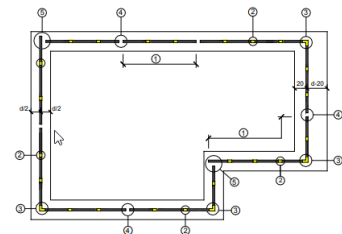
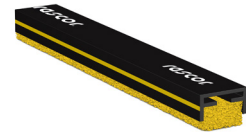
The profiles of the RASCOtec injection systems have been specially developed to generate the largest possible opening to the joint, with the fine-pored, open-cell carrier foam in the opening serving as a permanent material depot. Particularly when used with acrylates/gels, such as the injection materials in the RASCOflex AY series, the material depot has a very positive effect on the permanent sealing of any joint openings that may subsequently occur.

USE

The RASCOtec injection channel is a U-shaped profile with a semi-flexible foam insert. The rectangular profile shape and the overlapping foam insert ensure both a large contact surface with the substrate and a continuous, fully guaranteed contact surface on uneven substrates. The main areas of application for the RASCOtec injection channel are classic construction joints in general building construction and underground engineering, as well as in special underground engineering and tunnelling. If extensions to diaphragm walls are to be waterproofed, we recommend using the RASCOtec injection channel with a widened foam insert to ensure a continuous contact zone with the surface of the diaphragm wall.

FEATURES

- easy fixing
- 25 mm wide contact surface over joint
- no obstruction to steelfixing or formwork erection
- allows multiple injection
- remains flexible in cold conditions
- 28 outlet openings over a length of 10 cm
- U-profile made from partially recycled, environmentally friendly HDPE
- Material depot for additional sealing security



Further product info



EN D 30.09.2024

RASCOR International Ltd.
Gewerbestrasse 4
CH-8162 Steinmaur / Switzerland
Phone: +41 (0) 44 857 11 11
www.rascor.com
info@rascor.com

RASCOR Construction Chemicals GmbH
Ratsgasse 6
DE-97688 Bad Kissingen / Germany
Phone: +49 (0) 971 130 27 38
www.rascor.com
badkissingen@rascor.com

LEGAL NOTICE: The information provided on the use and application of our products in this technical data sheet is based on the present state of our knowledge. The customer shall bear sole responsibility for the proper specification, application and use of the products in line with the intended purpose, project-specific conditions and external actions. The most recent technical data sheet shall apply. The current technical data sheets are available at www.rascor.com. Our General Terms of Business shall form an integral part of this technical data sheet.



RASCOtec Injection Channel

INJECTIONSYSTEMS

TECHNICAL/PHYSICAL DATA

	Channel	Foam strip
Size	length 200 cm width 30 mm height 20 mm	length 200 cm width 25 mm height 20 / 40 mm
Colour	black / yellow	yellowish
Supplied form	solid	solid
Chemical base	polyethylene (HDPE)	polyester
Hazardous goods/ADR	none	none
Storage/shelf life	unlimited	unlimited

SUPPLY/ADDITIVES

Item no.	Product	Container	Contents
1102.1011.020	RASCOtec Injection Channel 25 x 20 mm	bundle	50 m
1102.1011.040	RASCOtec Injection Channel 25 x 40 mm	bundle	30 m
1102.1081.001	RASCOtec IC Feeder Cap	bag	100 pcs
1102.1082.001	RASCOtec IC Connector Cap	bag	100 pcs
1102.1084.001	RASCOtec IC Angel 90°	bag	100 pcs
1102.1086.002	RASCOtec IC sealing end	bag	500 pcs
1190.0303.001	RASCOfix Nail Plug 6/60	box	200 pcs
1190.0302.001	RASCOfix Nail Plug 6/80	box	200 pcs
1205.0302.001	Nozzle hose 18 mm I Ø 12 mm / A Ø 18 mm	roll	50 m



RASCOtec Injection Channel

INJECTIONSYSTEMS

APPLICATION

The base shall be swept clean and loose particles removed. The standard injection channel (with 20 mm foam insert) shall be fixed by nail plugs through the pre-drilled holes to the clean, cementitious base. The special foam, which is compressed during fixing, accommodates any unevenness in the base, thereby preventing infiltration. Injection channels with a 40 mm high foam insert shall be used in case of extreme irregularities in the base. Individual grouting sections shall be formed by leaving a 5-7 cm gap between joints during laying. This allows the formation of a „bung“ during concreting to separate the required grouting sections.

GENERAL GUIDELINES / SAFETY NOTICE

Injection channels shall always be laid directly on a cementitious base. Any plastics or metal parts of expanded-metal stop-end forms, reinforcement continuity systems or the like shall be removed prior to fixing. It is essential for later grouting that the injection channels be properly encased in concrete. Honeycombing (gravel pockets) and other defects shall be repaired prior to grouting.

No special safety instructions are required



assembly video



LEGAL NOTICE: The information provided on the use and application of our products in this technical data sheet is based on the present state of our knowledge. The customer shall bear sole responsibility for the proper specification, application and use of the products in line with the intended purpose, project-specific conditions and external actions. The most recent technical data sheet shall apply. The current technical data sheets are available at www.rascor.com. Our General Terms of Business shall form an integral part of this technical data sheet.

RASCOR International Ltd.
CH-8162 Steinmaur / Switzerland
Phone: +41 (0)44 857 11 11

RASCOR Construction Chemicals GmbH
D-97688 Bad Kissingen / Germany
Phone: +49 (0)971 130 27 38